

Bariatric Hospital Gowns 10XL

Material: Polycotton

Colour: Diamond pattern on white

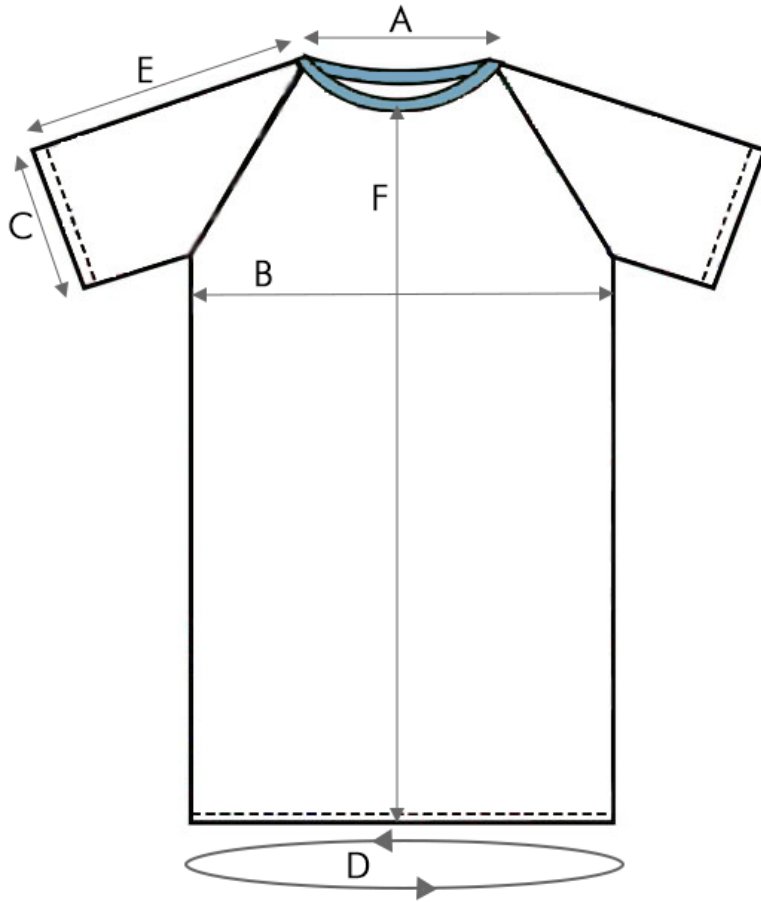
Size: Adult – see overleaf

Product codes: PG00410L

Washable: Launderable at thermal disinfection temperatures



Bariatric gown 10XL sizing



A	Neck circumference	106cm	D	Sweep around bottom	263cm
B	Chest circumference	244cm	E	Arm length	44cm
C	Cuff circumference	84cm	F	Length from shoulder high point	120cm